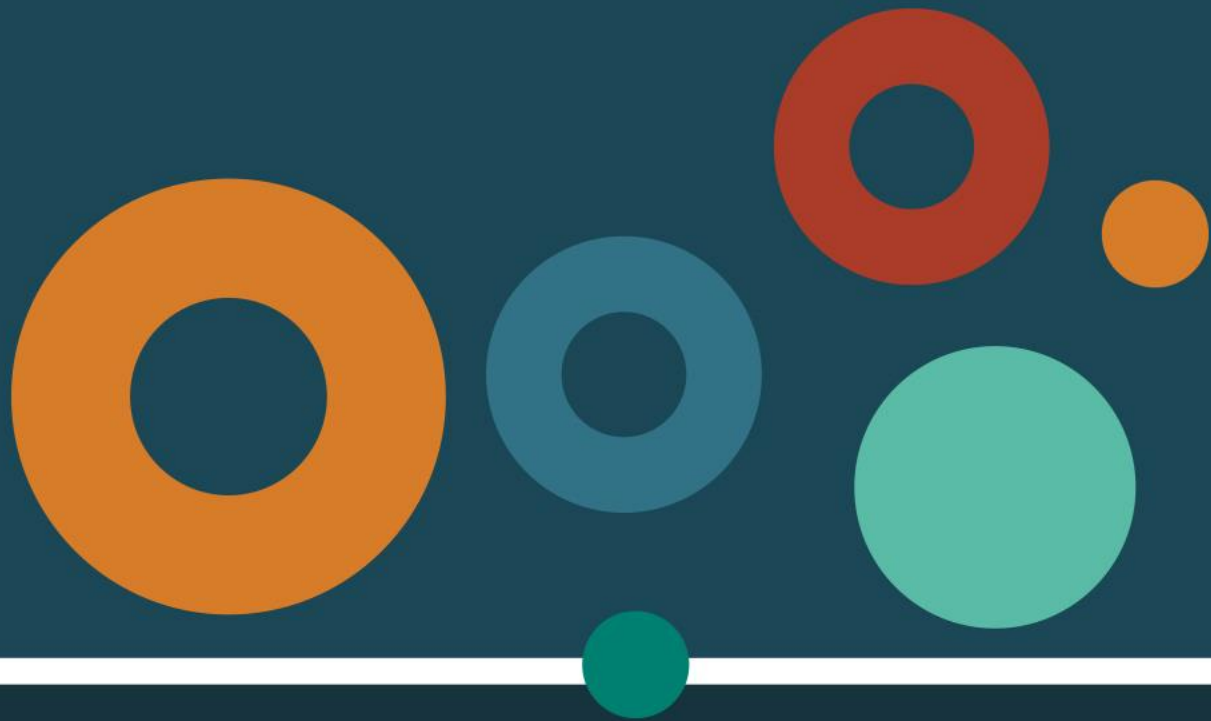


# GSQ's New Discovery Program

Technical Workshop for Industry



Mt Isa  
18-19<sup>th</sup> Sept 2019



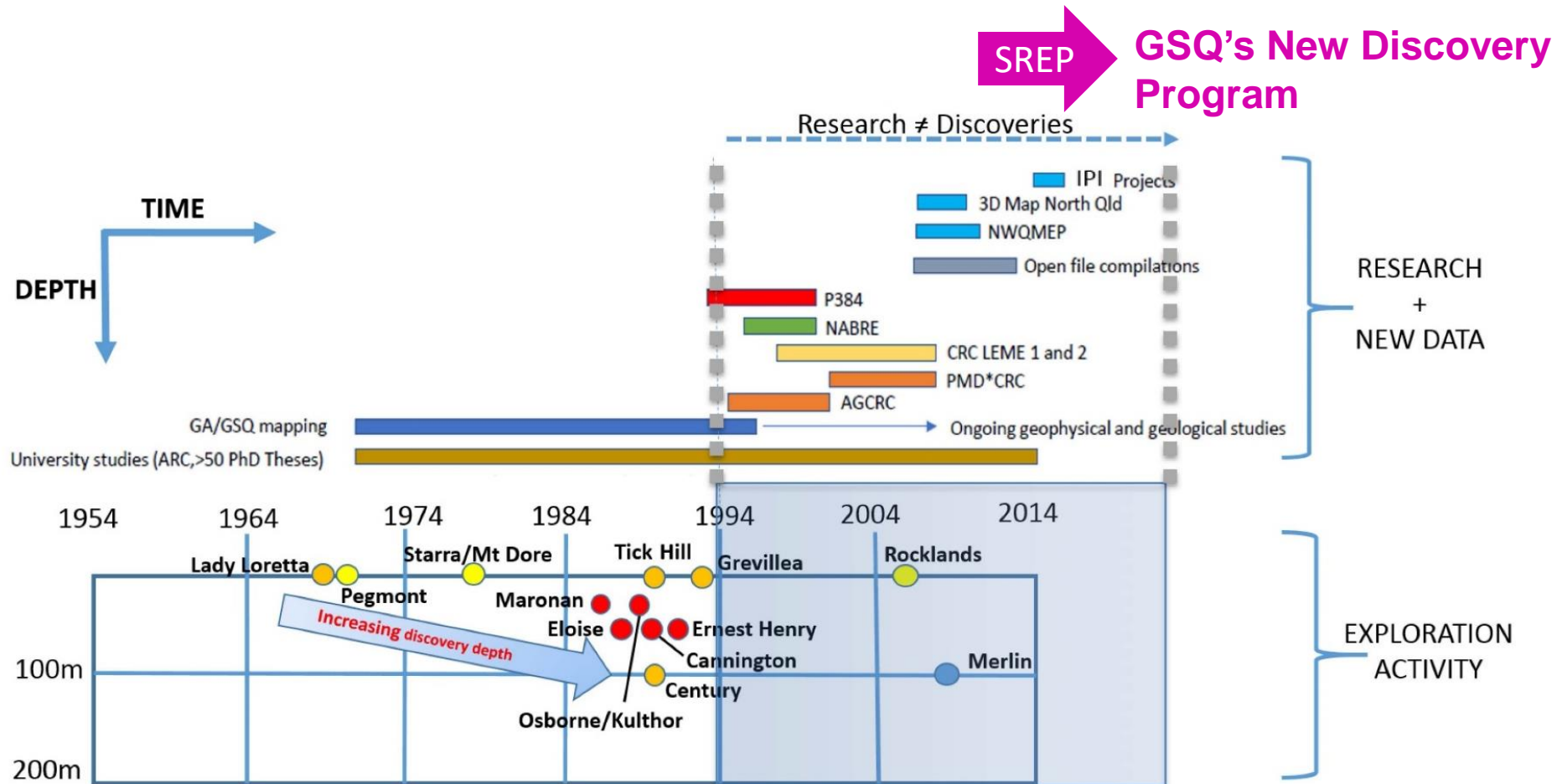
# Geological Survey of Queensland



- Our main goal is to enable industry success
- Moving towards digital future - 'data is king'
- Do the jobs that will help industry, but are too big too hard, too expensive for any one company to undertake
  - Regional geophysics
  - Regional geology.... Of areas under cover; change our map production to mapping under cover
  - Mineral systems studies
- **Greatest value for industry in reducing the unknowns – minimise exploration risk**

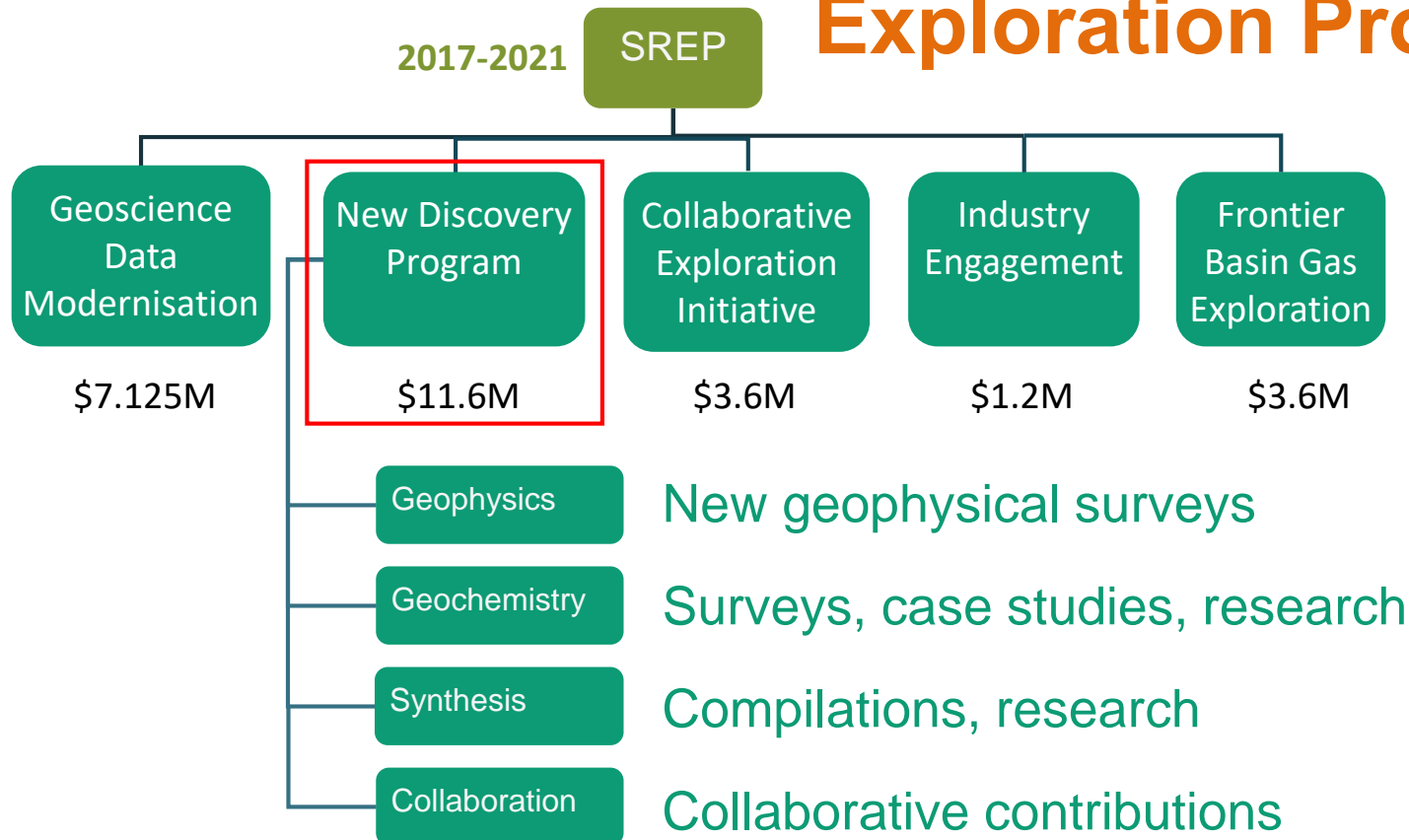
# Geological Survey of Queensland

Knowledge transfer gap – academia vs discovery



# GSQ Projects and Funding

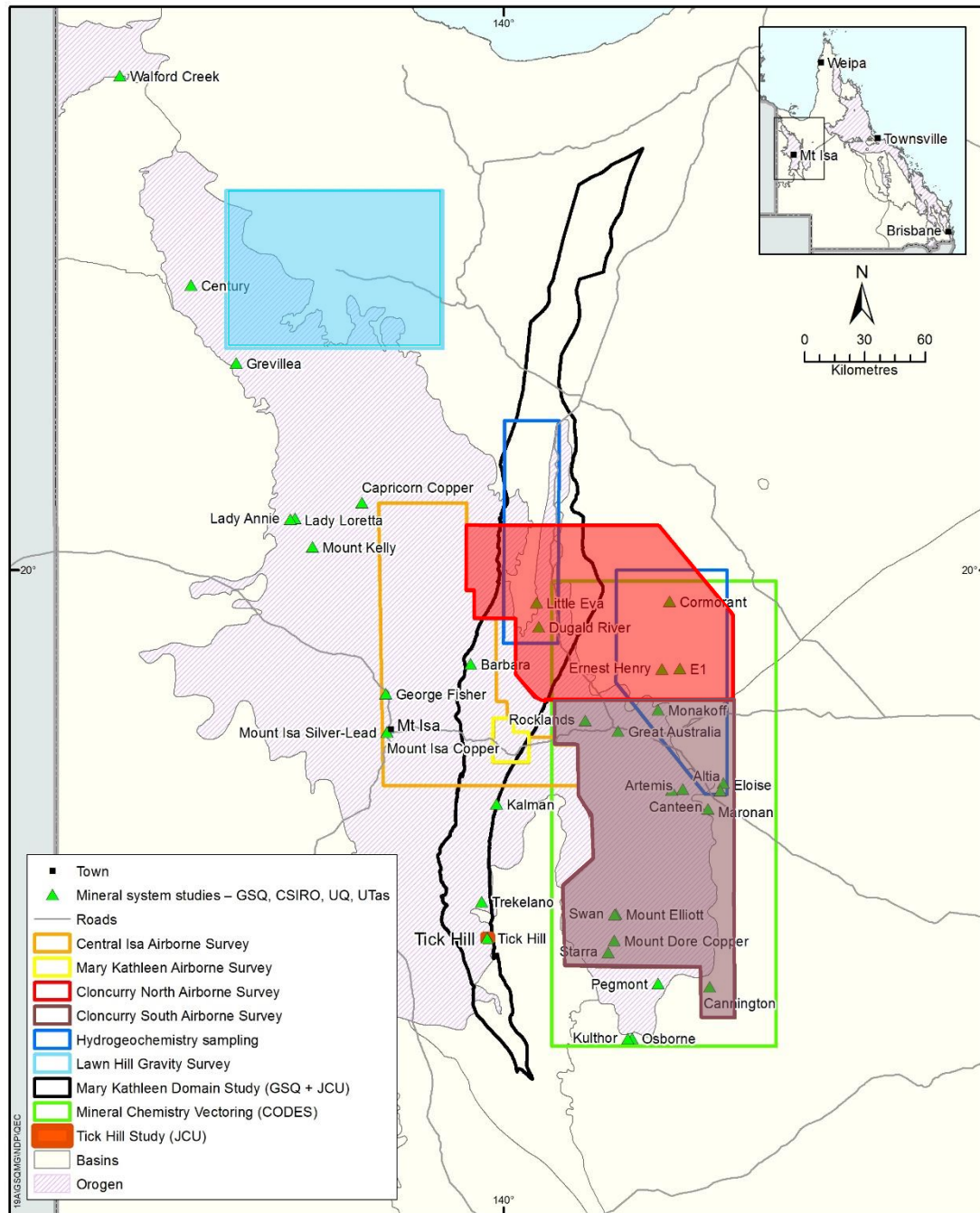
## Strategic Resources Exploration Program



# Coverage of the New Discovery Program

Completed Geophysical Surveys:

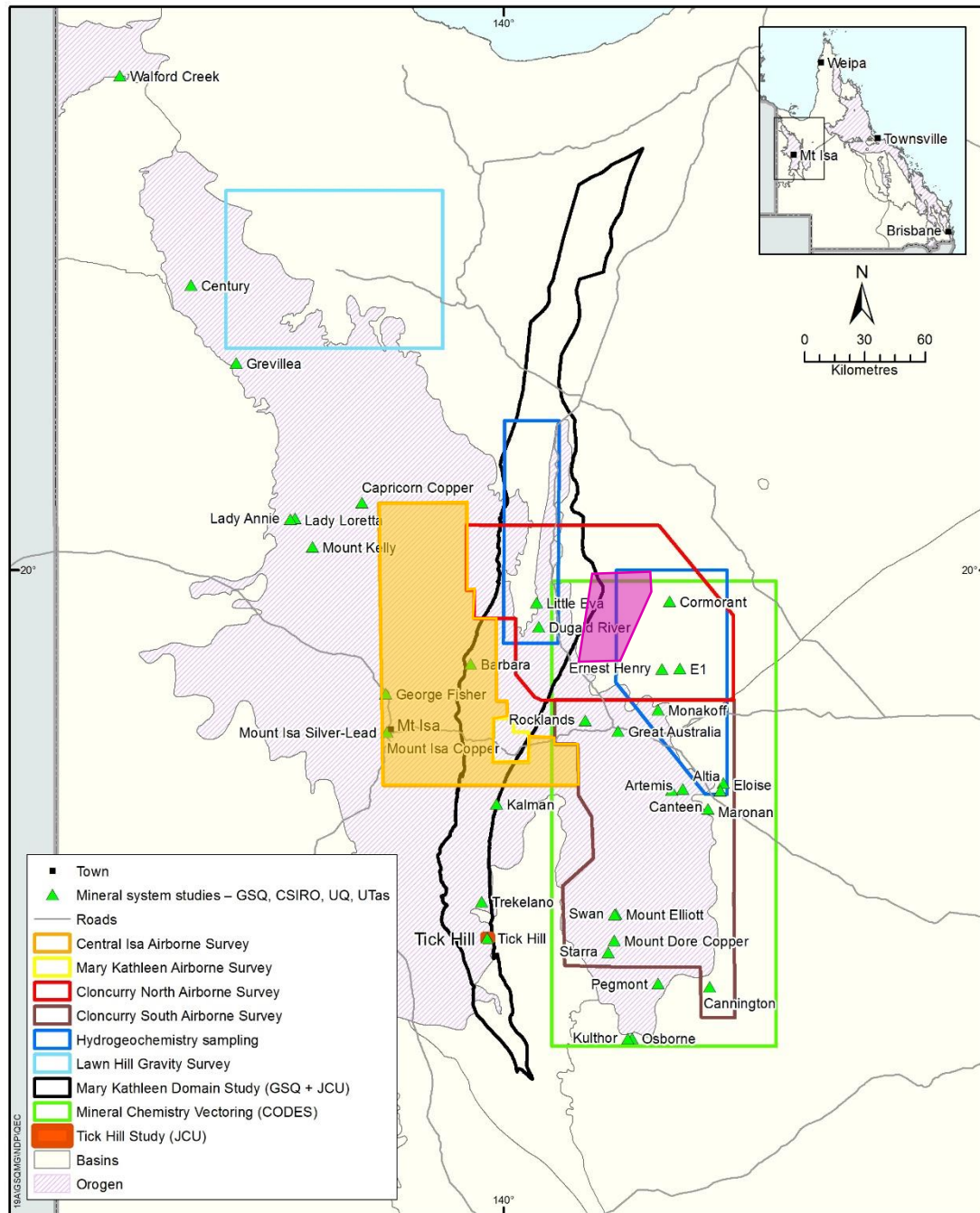
- Lawn Hill gravity
- South Cloncurry airmag + rads
- North Cloncurry airmag + rads



# Coverage of the New Discovery Program

To be completed Geophysical Surveys 2019-2020:

- Central Isa airmag + rads
- Cloncurry Extension MT
- AGG and AEM (areas to be determined)

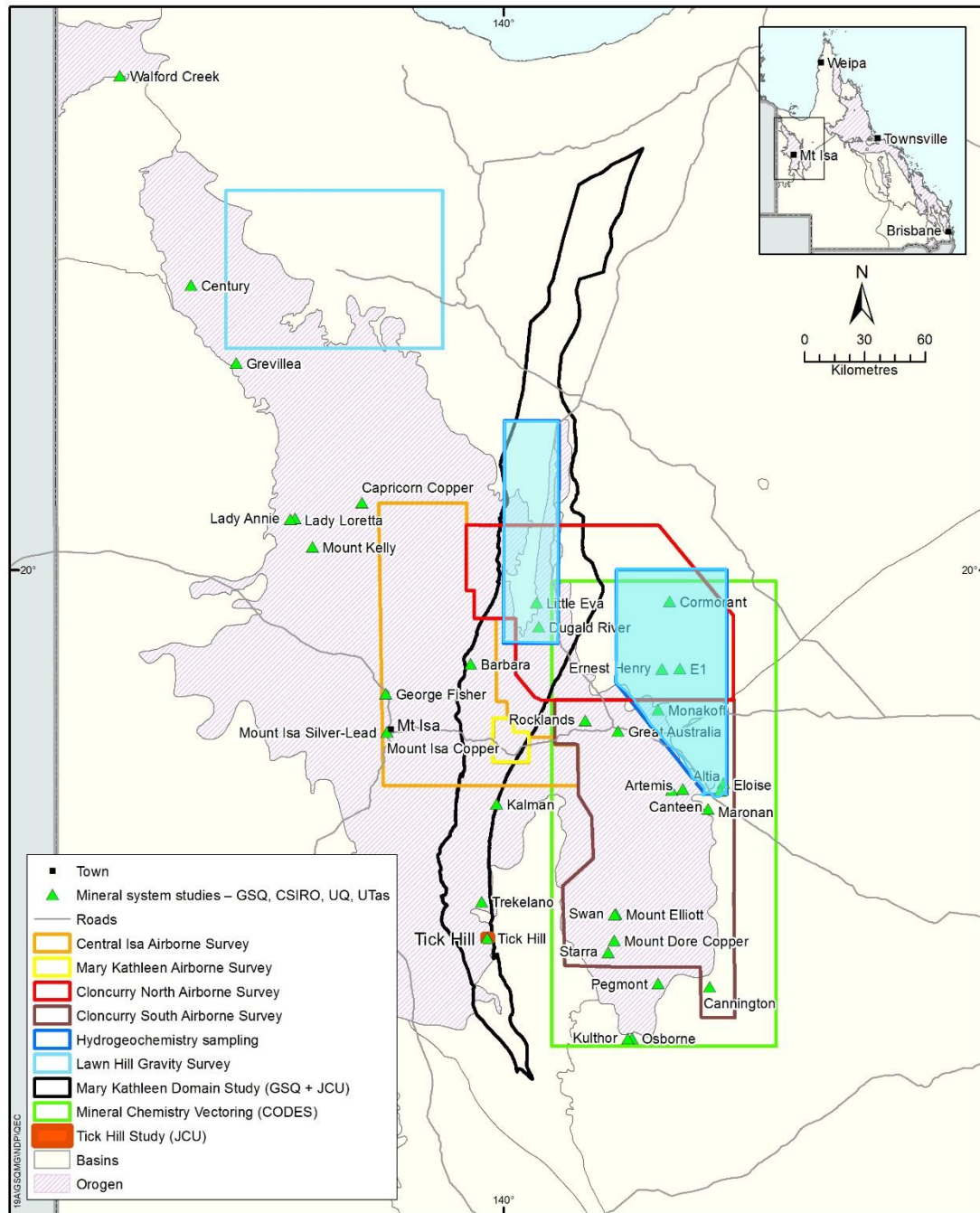




# Coverage of the New Discovery Program

Hydrogeochemistry (with CSIRO):

Sampling completed, awaiting analytical results

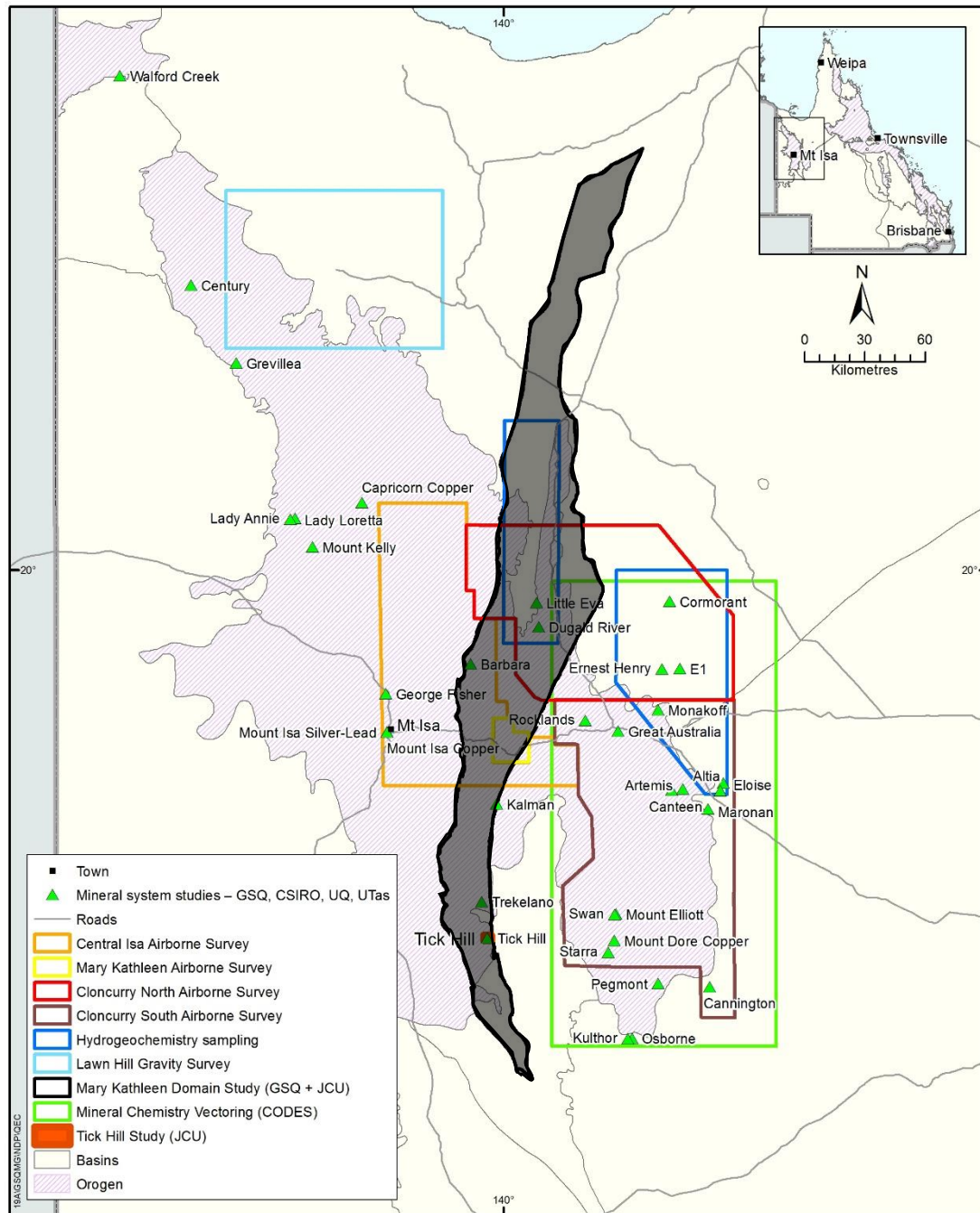




# Coverage of the New Discovery Program

Mary Kathleen Domain Geology:

- Field work completed
- geochem and geochron underway



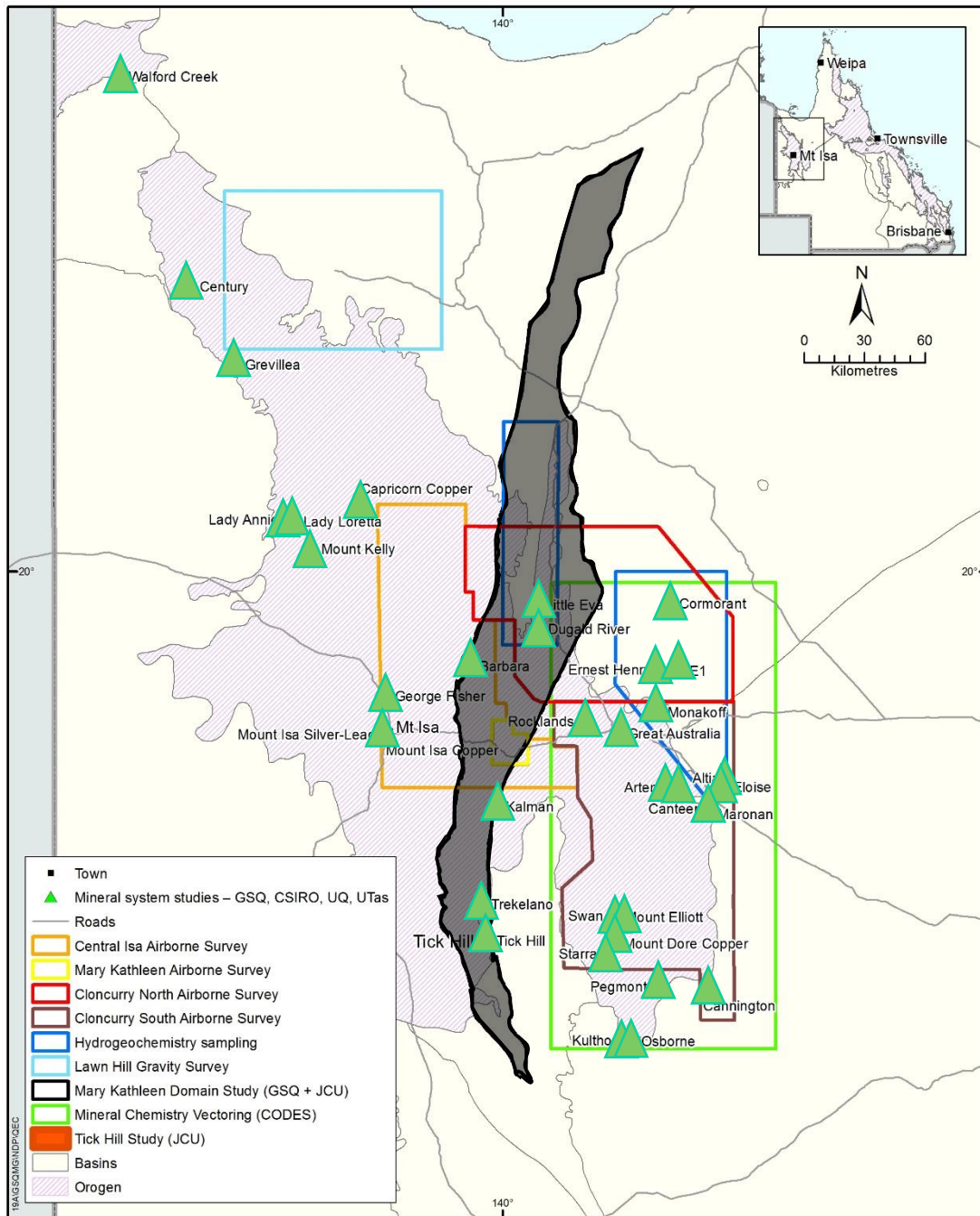




# Coverage of the New Discovery Program

Reference Collection of Significant Deposits:

- Ernest Henry 90% complete – out in Dec 2019
- Finished scanning Mt Isa system holes

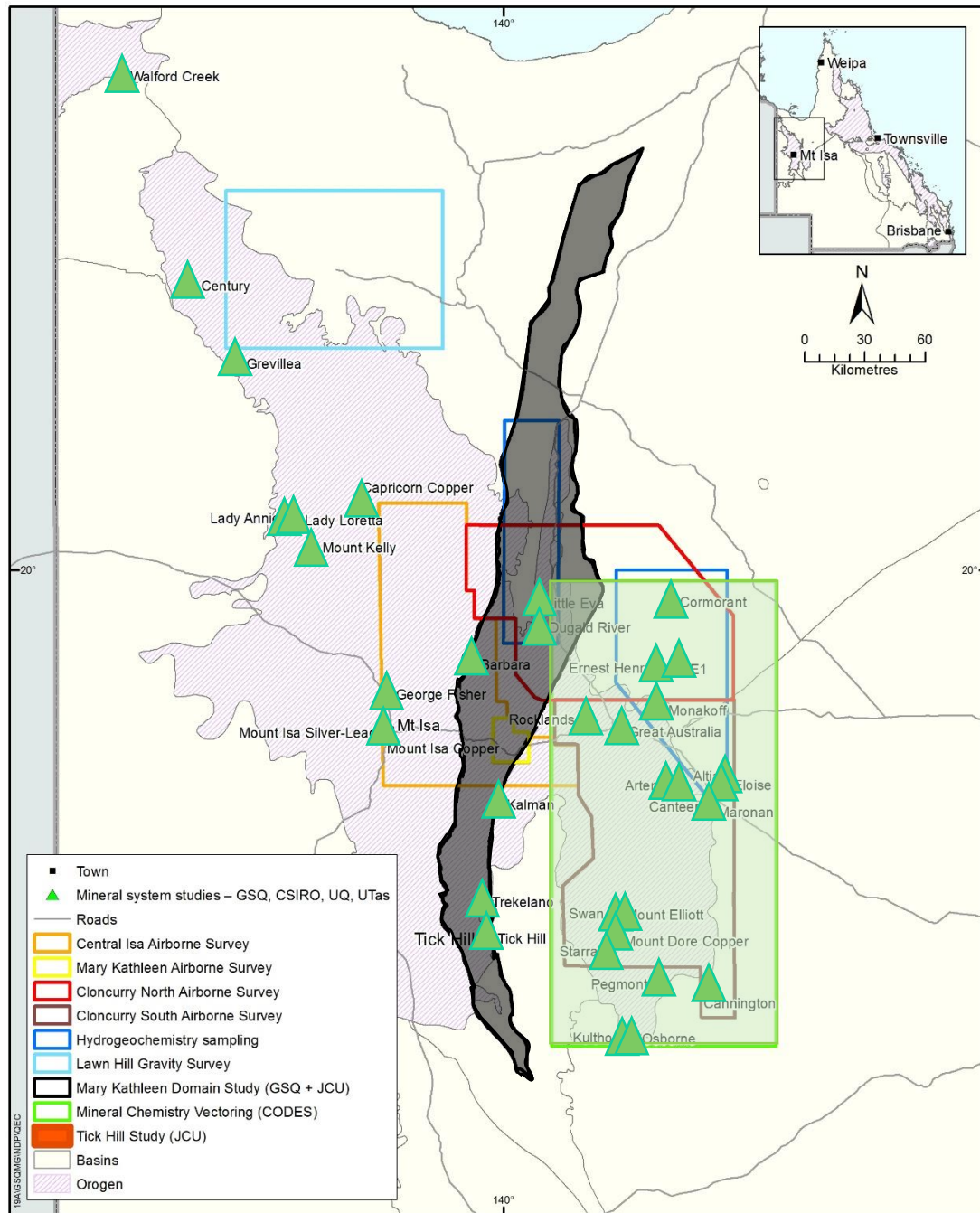




# Coverage of the New Discovery Program

Collaborative Projects:

- **JCU:** Mary K tectonics and magma fertility
- **CODES:** mineral chemistry vectoring
- **UQ:** Deposit Atlas
- **CSIRO:** Deposit fingerprints



# Today's Workshop

Today we will hear from:

## ***GSQ & NTGS***

*New data and activities*

## ***Terra Search***

*Exploration under cover*

## ***James Cook University***

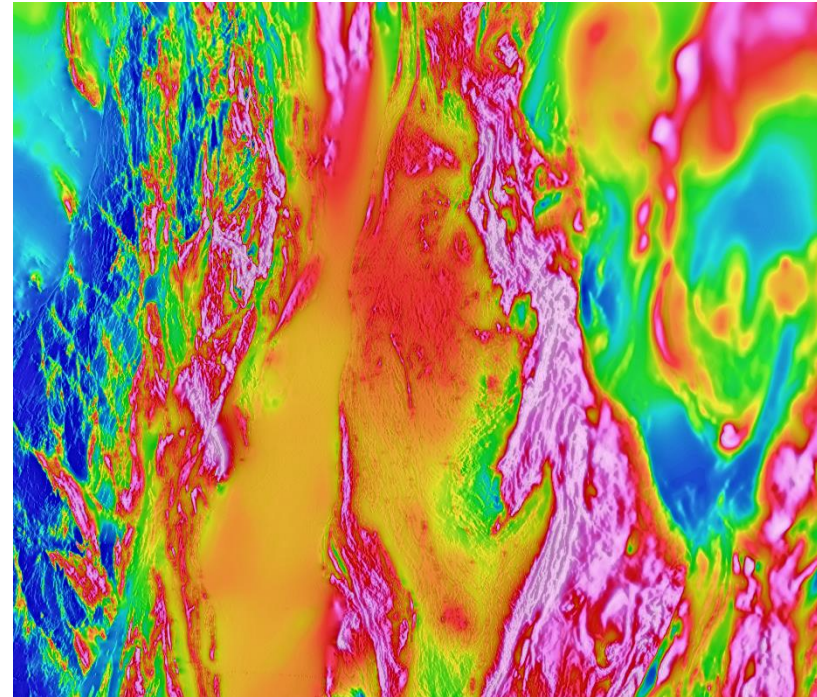
*Mary Kathleen belt update*

## ***CODES, University of Tasmania***

*Geochemical fingerprinting of key deposits*

## ***Mira Geoscience***

*Geoscience Analyst*



# Workshop Goals

- The survey's goal is to enable industry success through:
  - Dissemination of knowledge
  - Filling in big scale knowledge gaps
  - Enabling collaboration (bringing different groups together)



# Workshop Wifi



Workshop wifi

Select Ibis Styles Conference Wireless

Password: JULIUS

Presentations will be available online after the workshop

Presentations will be videoed, available online

# Wednesday Program

- **Morning Session**

- Regional updates
- Mary Kathleen Domain

- **Afternoon Session**

- HyLogger for Exploration workshop
- Geoscience Analyst workshop
- Q&A with GSQ Reps

- **Networking Session**

- Isa Hotel
- From 6pm

- **Dinner 'til late**

- Isa Hotel
- Pay your own

