

**SMI BRC**

WH Bryan Mining &  
Geology Research Centre



*DMQ Project Completion Forum 2017*

## **‘Southern Cloncurry IOCG/ISCG Terrain - Granite Morphology: Seismic *cf* Vp/mg Models’**

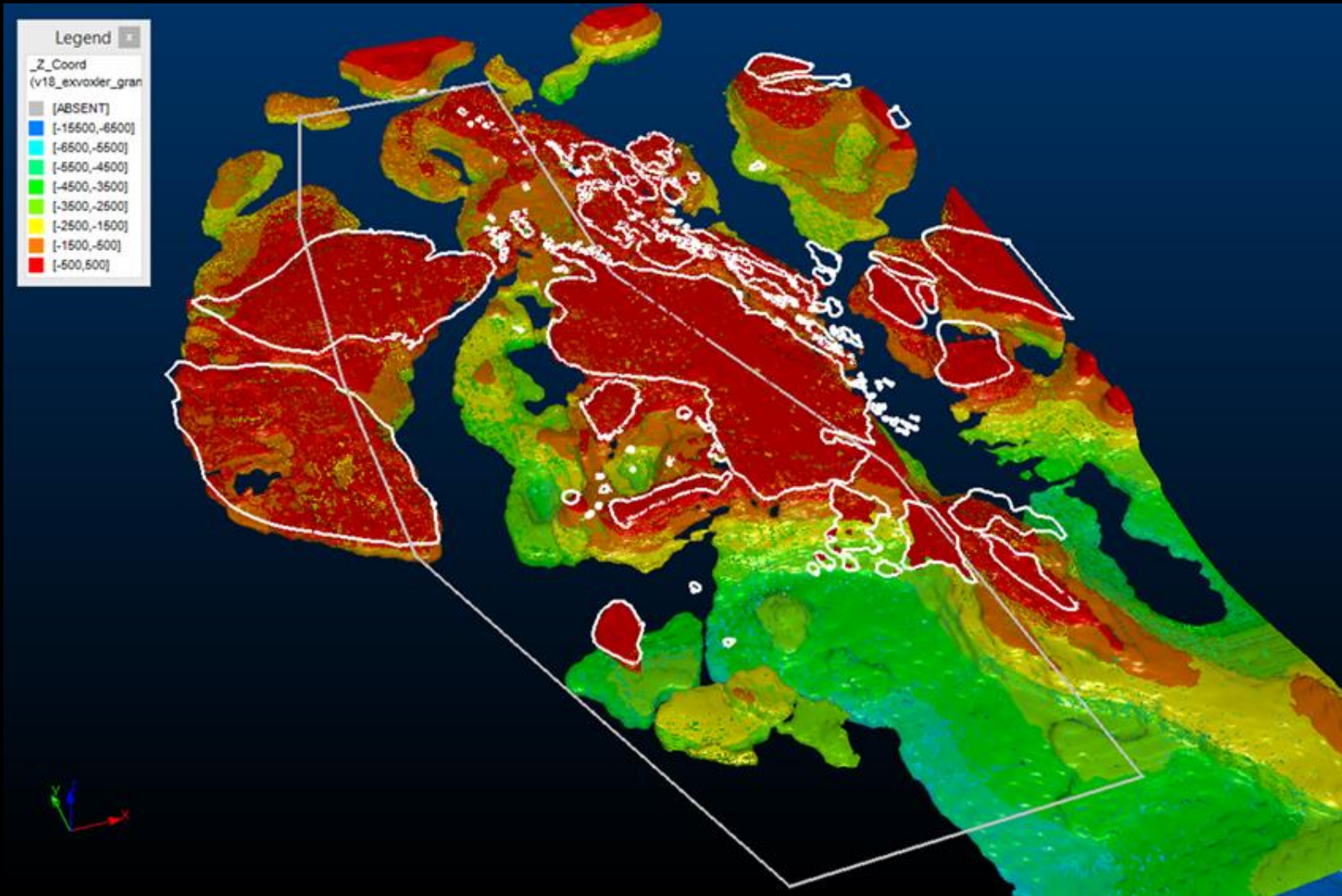
*Mark Hinman*



**Geological Survey of Queensland**



# Constrained $V_{pmg}$ Gravity Inversion Domained RL mid-Granite 'PERT' Models



**Version 18 DMQ Granite Model**  
... compare with Seismic Interpretation





# Constrained *Vp*mg Gravity Inversion *Vp*mg V18 Granite Model *cf* Seismic

±2km projection of Seismic  
Crude conformity V18 *Vp*mg Granite Model & Seismic Interp  
Misfit suggests 'fuzziness' with which *Vp*mg Granite geometries should be applied ... ~1-2km  
No attempt to interpret granites >6km in Regional Seismic ... reprocessing required!

